



# Leadership and Circular Economy

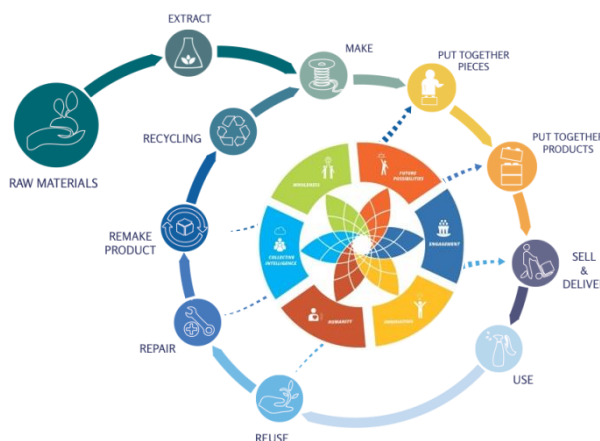
Implementing circular economy models in the organisations of the future

1 DAY WORKSHOP
 WE CAN COME TO YOUR PLACE
 ENGLISH or GERMAN

## COURSE DESCRIPTION

Organisations realise the need to transition towards a more circular model to meet the expectations of their stakeholders for a more sustainable business culture. This requires rethinking the organisation's business model, which in turn requires new behaviours and a new kind of leadership.

In this one day workshop, you will learn about the concept of circular economy, practice it with the © Circulab Game, look at an example of a 'circular' company, find out about the leadership mindset needed to implement a circular model in your organisation, navigate challenges with the © Collective Leadership Compass and create an action plan to help shift your business model.



## KEY TARGET GROUPS:

- ✓ CEOs and Directors in the Corporate Sector
- ✓ CSR, HR, PR and Marketing Managers
- ✓ Product and Business Developers
- ✓ Engineers, Designers and Innovation managers
- ✓ (Social) Entrepreneurs and Start-ups
- ✓ Government Sector employees working on sustainability topics in public-private partnerships
- ✓ Also teams (cross-departmental)

## KEY TAKE-AWAYS

For individuals:

- ✓ Learn about the circular economy model and apply it to a case (real or simulated)
- ✓ Learn and experience which behaviours are required to help implement circular, innovative and more sustainable models

For companies:

- ✓ Get your team/s to understand a new, more sustainable, way of doing business and discovering new 'circular' opportunities
- ✓ Review current behaviours and organisation structures and see how these can be shifted towards more sustainability
- ✓ Optional: Look at a specific challenge/case you have and find sustainable solutions, with an agreed timeframe for follow-ups

## COURSE FACULTY

Phoebe Blackburn



**Communications & Sustainability Consultant**

Prior to going freelance, Phoebe worked for 8 years at French energy group EDF in London and Paris in communications and CSR, after working at the French Embassy in London in the cultural sector and studies at Oxford and Bonn universities. She is a member of *Circulab Network*, started in Paris in 2015, with 45

facilitators in a dozen countries, whose goal is to promote the circular economy model using tools and business games. She also does editorial work and moderating, and is a language coach for TEDx speakers, managers and start-ups. Phoebe is a founding member of German co-operative *sustainable natives*. As a freelancer, she has worked with over 60 organisations of varying size, sector and status in Vietnam and Europe.

Martin Fielko



**Project Manager for Educational Projects at the Collective Leadership Institute**

Martin is a marketing manager, certified by the German Chamber of Commerce and Trade certified. Before joining the Collective Leadership Institute in 2016, he worked in the publishing and media industry for 14 years. As an international business manager he was in charge of the educational activities

of a major book publishing group in Asia, the MENA region and Turkey. His focus and passion is education and digitalization. He has spoken on these topics at conferences in Korea, Japan, Thailand, Taiwan, Turkey, Brazil, Germany and the UK. He is also a member of the German Social Entrepreneurship Network (SEND) and has a focus on CSR. At CLI, Martin is in charge of educational programme development, as well as marketing.



## CONTACT US

Please contact Martin Fielko for further information and registration:

Phone: +49 331 581 65 96 – 18, E-Mail: [martin.fielko@collectiveleadership.com](mailto:martin.fielko@collectiveleadership.com), [www.collectiveleadership.com](http://www.collectiveleadership.com)

## REGISTRATION FORM

I would like to officially register for the **Leadership and Circular Economy** course.

Specifications:

Number of course participants:  Course date:

Course language:  ENGLISH  GERMAN Course location:

Tuition fee\*  €

\*Please get in touch with us in advance to negotiate your individual offer

Person responsible for registration:

Ms./Mr.:  First Name:  Name:

Organisation:

Position:

Project or Department:

Address:

Country:

Phone:

Email:

Invoice Details:   
(if address or person is different):

**TERMS** Please provide a separate **list with names of participants** with the registration, the final list needs to be submitted to CLI at the latest 1 week before the seminar. The management of invitations of individual participants is the responsibility of the requesting organisation.

**Registration:** Please send the completed and signed form via fax to +49 (0) 331 58 16 596-22 or as a scanned PDF document or smartphone photo to [martin.fielko@collectiveleadership.com](mailto:martin.fielko@collectiveleadership.com).

**Tuition fee:** Will be negotiated individually. The amount depends on group size and the amount of customized specifications compared to the standard course. The tuition fee includes preparation and facilitation of the course as outlined above and includes all training material.

**Travel expenses:** The requesting organisation bears the cost of daily allowances, accommodation, all related travel expenses for both trainers (including e.g. visa fees, transport to and from airport/venue etc.). These costs will be calculated according to the regulations of the German Ministry of Finance. The costs for daily allowances, accommodation, all related travel expenses for the two trainers will be apportioned onto the tuition fee per participant for billing purposes.

**Mode of payment:** After your formal registration we will send you an invoice. The tuition fees will be due 10 days after receipt of the invoice, latest 2 weeks before the start of the course. The travel and accommodation cost as well as allowances for two facilitators will be distributed proportionally to the tuition fees per person.

**Venue:** Arrangement of venue, transport of participants and other organisational issues related to the course are the sole responsibility of the requesting organisation.

**Cancellation fees:** Any cancellation after formal registration will lead to a cancellation fee. For cancellations received up to eight (8) weeks prior to the course 30%, up to four (4) weeks prior to the course 50%, less than four (4) weeks prior to the course 100% of the course fee. Cancellation fees do not apply if participants are replaced.

I hereby consent to the terms and conditions of the Collective Leadership Institute's educational programme.

Date:

Signature: