

VIRTUAL REALITY TRAINING WITH CLI

A cutting edge online experience to navigate complex change!



Watch this video to get a first impression:

<https://www.youtube.com/watch?v=rq8z556KkbE>

TWO TRAINING CENTRES AVAILABLE

WBS Learning Center
(up to 40 people, all features)



WBS/CLI Coaching Zone
(up to 12 people,
2 training rooms and a park)



IMPRESSIONS WBS/CLI COACHING ZONE

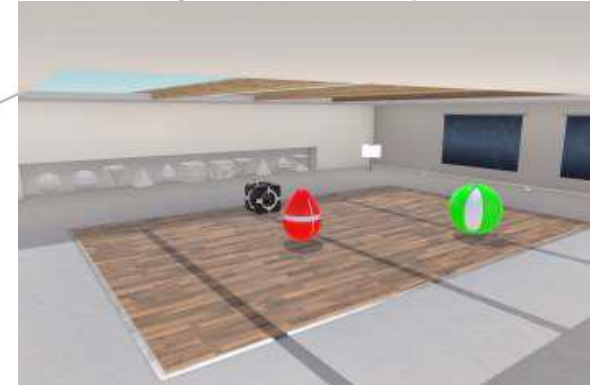
Lobby



Small Training Room



Large Training Room



Terrace



Park



Outdoor Training Area



HOW DOES IT WORK?

1. SIGN UP



- we will send you a username and password after filling in the registration form

2. CREATE



- your avatar

3. LEARN



- the first steps: How to walk, how to use media, how to interact, we will support you

4. EXPERIENCE



- an online session which feels like a CLI course in the real world

5. SCALE UP

- use the platform again and again, invite partners, ...

PRODUCTS OFFERED

The Art of Stakeholder Collaboration Follow Up Session

- Especially for course alumni who are trained in the Dialogic Change Model
- One day learning experience
- check-in again online!
- Recap what has been learned
- additional learning sessions
- exchange knowledge and experiences.

More information in our product flyer.

Other offers:

Team coaching, partner coaching,

Collective Leadership Compass Deep Dives, ...

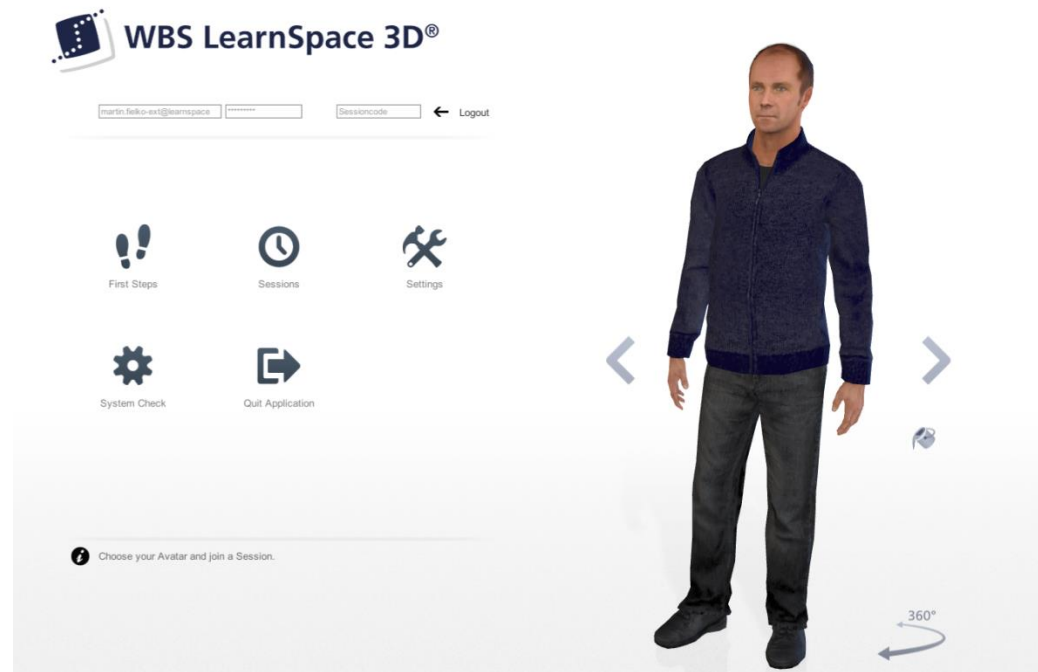


CHECK IT OUT!

More information at:

<http://www.collectiveleadership.de/blog/article/online-learning/>

Have a first try!



Feel free to request your individual offer:
martin.fielko@collectiveleadership.com.