



COLLECTIVE LEADERSHIP INSTITUTE

The Art of Stakeholder Collaboration¹

Key concepts and competencies for achieving common goals.

🕒 20 - 23 JUNE 2017

📍 BERLIN, GERMANY

🗣️ English Tuition fee: € 1.650

COURSE DESCRIPTION

Stakeholder Collaboration has been recognised as critical to finding solutions to the complex challenges of sustainable development. **The Art of Stakeholder Collaboration 1** is the foundation course to the Collective Leadership Institute's Skills Development Programme.

In this course, you will build your strategic abilities and implementation skills in stakeholder engagement, dialogue, and collaboration processes for high impact solutions.

YOUR KEY TAKE-AWAYS

- ▶ Learn how to successfully implement stakeholder collaboration through the application of the *Dialogic Change Model*
- ▶ Understand the business case for co-creative stakeholder engagement
- ▶ Learn how collective intelligence, commitment, and ownership can emerge
- ▶ Produce a stakeholder network map to prioritise engagement activities
- ▶ Develop new engagement strategies to minimise unproductive conflict and a methodology to create sustainable partnerships

CONTACT US

We are offering *special discounts for early bird registrations* and for the *participation of teams* of at least 3 persons. Please contact Martin Fielko for further information and registration forms for one of our course.

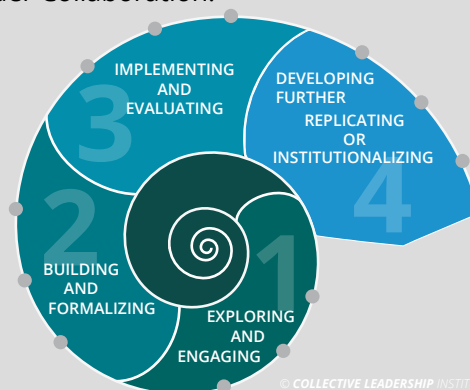
Phone: +49 (0) 331 581 65 96 – 18,
E-Mail: martin.fielko@collectiveleadership.com

For more information also visit our website:
www.collectiveleadership.com

We empower people to lead collectively towards a sustainable future.

THE DIALOGIC CHANGE MODEL

The Dialogic Change Model is a methodology that has been developed by the Collective Leadership Institute. It is based on successful implementation of Stakeholder Collaboration.



STAKEHOLDER COLLABORATION ACCREDITATION SCHEME (SCAS)

Collect credits with every course or enrol for the SCAS and become an **Accredited Stakeholder Collaboration Expert** to work with the Collective Leadership Institute's methodology.



TAILOR-MADE TRAINING

Customise our courses to your needs or to the needs of your stakeholder collaboration system. Our tailor-made trainings are highly oriented towards achieving concrete results, **bring team members and partners into intense exchange**, focus on project work, and help bring strategic issues forward.

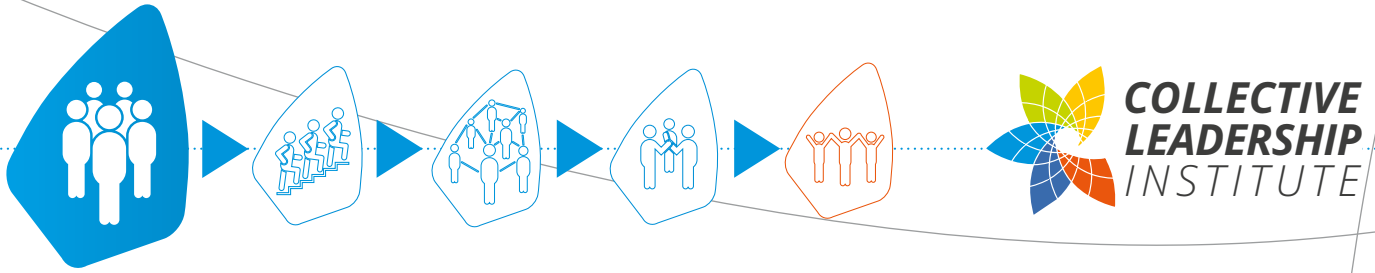
STAKEHOLDERDIALOGUES.NET

Join our community for dialogue & collaboration to stay up-to-date, learn online, use our toolbox, and exchange best practices with others:

www.StakeholderDialogues.net



WWW.COLLECTIVELEADERSHIP.COM



WHAT IS THE ART OF STAKEHOLDER COLLABORATION?

Stakeholder Collaboration can become a vital contribution to making our world more sustainable, as a key methodology for finding solutions to complex challenges, new forms of governance or learning of innovation processes. Whether you fail or succeed at that, depends less on a rigid instrument or a rigid blueprint of actions than it does on your ability to learn the art of engaging others for collaborative change.

Stakeholder Collaboration is the art of respectfully turning differences into progress. But as with all arts, there are skills you need to develop in order to succeed, to know when and how to use dialogue, and when to take action. This course is based on the combined experience of our experts and of hundreds of alumni from more than 105 countries, active in the public sector, the private sector, and civil society. It focuses on understanding success factors in Stakeholder Collaboration. After this course you will be able to initiate and implement Stakeholder Collaboration successfully.

COURSE FACULTY

Douglas F. Williamson

Managing Partner and Senior Project Manager at the Collective Leadership Institute



Douglas is an education, facilitation, and sustainability communications expert and a high-energy, multi-skilled leader and team player with more than 15 years' experience in the areas of partner relationship management, strategic planning, project management, natural resources management and international affairs. Having worked with several international environmental NGOs, the United Nations University and the US Environmental Protection Agency's Climate Change Division, Mr. Williamson has a history of success in conceptualizing, planning, co-organizing and implementing a broad variety of projects and initiatives.

Elisabeth Kuehn

Project Manager at the Collective Leadership Institute



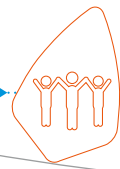
Elisabeth Kuehn is an experienced international project manager in sustainable natural resource management and integration of marginalized communities. She worked extensively on informal sector integration as well as environmental issues in Tunisia and the MENA region, She now develops CLIs strategy on projects in the region, and facilitates courses. She holds a Master degree in International Relations from Durham University and in Refugee and Forced Migration Studies from the University of Oxford.

OUR REPUTATION

Founded in 2005 with offices in Germany, South Africa and the United States, the Collective Leadership Institute is an international non-profit organisation with the **mission to scale up collaboration skills for a sustainable future**. Our capacity building approach **empowers people and organisations** to address sustainability challenges successfully with a focus on **high quality stakeholder collaboration, dialogic change and collective leadership**.

With our sound experience and in-depth knowledge we support Multi-Stakeholder Dialogues (**MSD**), Public Private Partnerships (**PPP**), **Cross-Sector-Partnerships**, **Public-Private Dialogue (PPD)** and **Collaborative Change Management**. Our conceptual and practical experience in making large systems stakeholder collaboration work includes amongst others initiatives such as dialogue and collaboration structures for improved **water and natural resources management**, stakeholder collaboration in **climate change responsibility**, responsible **supply chain initiatives**, or multiple local, regional and international **action networks**.

Thanks to our proven methodologies, excellent reputation and achieved impact, the Collective Leadership Institute is **one of the world's leading mission-driven organisations** in the field of making collaboration for sustainability work. More than **2200 alumni** of our programmes being professionally active in more than **100 countries**, as well as more than **25 successfully supported projects** showcase our experience in helping to shift multi-actor collaboration to deliver tangible results in change initiatives.



**COLLECTIVE
LEADERSHIP
INSTITUTE**

REGISTRATION FORM

I would like to officially register for the **The Art of Stakeholder Collaboration 1** course.

■ 20 - 23 JUNE 2017 BERLIN, GERMANY English Tuition fee: € 1.650

Have you previously attended any of our courses?

yes no

Mrs./Mr.:

First Name: Name:

Organisation:

Position:

Current Project:

Address:

Country:

Phone:

Invoice Details:

Email:

Private Email:

Do you (wish to) take part in the Stakeholder Collaboration Accreditation Scheme?

yes no please send me more information

Registration: Please send the complete form with invoice details via fax to +49 (0) 331 58 16 596-22 or as a PDF document to martin.fielko@collectiveleadership.com.

Tuition Fee: The amount is €1,650 (7% VAT if required) and includes the costs for the training with all supporting materials and an extensive course fieldguide, a networking event, food and beverages during the days (coffee breaks and lunch break).

Mode of payment: After your formal registration we will send you an invoice. The tuition fees will be due 10 days after receipt of the invoice, latest 2 weeks before the start of the course. We kindly ask you to organize your overnight stay yourself. We will be glad to assist you in this respect.

Discounts: For the participation of teams of at least 3 persons we have a special discount available. Please contact us for further information via e-mail: martin.fielko@collectiveleadership.com.

Cancellation fees: up to 8 weeks prior to the course 30%, up to 4 weeks prior to the course 50%, after this 100% of the course fee. In case you find a replacement, the cancellation fees do not apply.

I hereby consent to the terms and conditions of the Collective Leadership Institute's educational program.

Date:

Signature: